

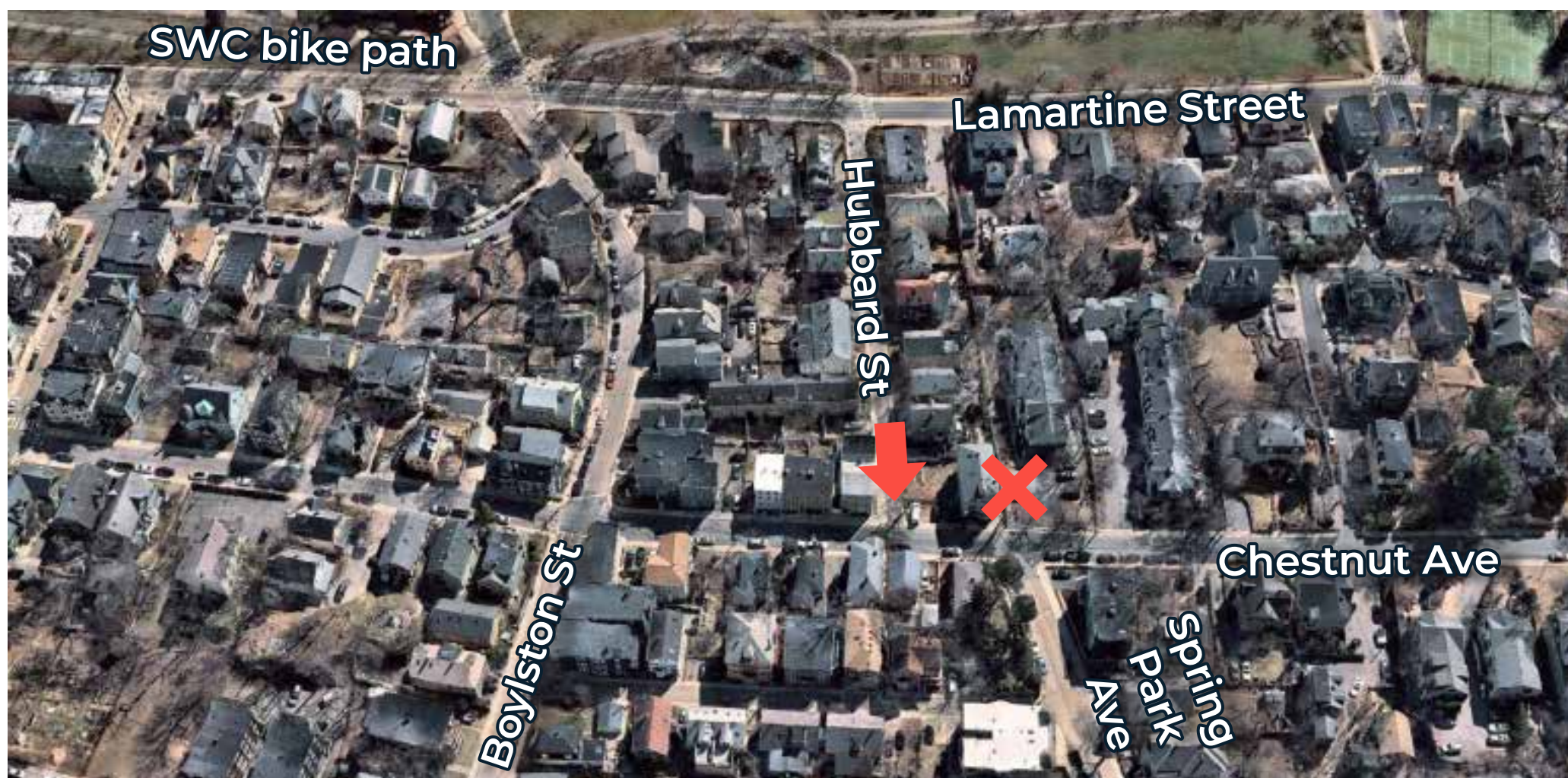
Why Boylston Street

Boylston Street is the only direct route between the Southwest Corridor, Centre Street, the new separated bike lane on South Huntington Avenue, and the Emerald Necklace.

People are already biking both ways on Boylston Street. 1 in 5 bicyclists ride contraflow near Danforth Street, the block approaching the Southwest Corridor.



There's no ramp to the Southwest Corridor bike path from Paul Gore Street.



There's no direct access to the Southwest Corridor bike path from Spring Park Ave.



Vehicle volumes are moderate. We can make the street safer and more comfortable with speed humps.

Artistic rendering of Boylston Street with a contraflow bike lane.

